

BRIGHT
CORNER



COMPANY PROFILE

ABOUT US

BRIGHT CORNER

Bright Corner has been established by experienced industry professionals to provide "Road and Highway Safety" products to corporates for relevant project requirements. We excel in Highway guardrails, Road/ Pavement markings and a full range of reflective signage materials.

Bright Corner was founded by industry professionals with years of experience in servicing corporate Clients in the financial capital of the country, Yangon. We have worked for Clients like Government Ministries and International Firms. To bring the finest level of service to our respected Clients.





BC
BRIGHT CORNER

OUR PHILOSOPHY

VISION

To be the most premier service provider in the Golden Land "Myanmar". With use of latest technologies forming the strong relationships with our Clients by maintaining cost, quality and deadlines.

To be the top multinational road safety products provider from Myanmar maintaining standards on par with the best in the industry, keep up to date with the latest techniques while continuing excelling in current market.

MISSION

OUR COMMITMENTS

- To provide cost effective & efficient products to all of our Clients with the aim to sustain as a long-term plan.
- To implant international quality standards in our local industry.
- To evolve and adapt Bright Corner company values to continue driving sustainable business success in a changing environment.

Thet Lwin Shwe @Mr.Ian

Founder and CEO

“

On behalf of our great Team, I would like to welcome you to Bright Corner company. We are always at your service, working with passion and dedication to offer you a qualitative range of Road and Highway safety products.

Our team of professionals hold vast experience and skills to supply the products as per the specifications given by the Client. Our road safety products are durable, resistant to harsh weather conditions, and provide visibility from a distance in order to avoid accidents. The entire range is marketed under the brand name "Safety Works".

All of our operations are managed by me and Marketing Director, 'Mr. Kyaw Kyaw', who has helped us in achieving such a huge success in the industry. In addition to fulfilling our social responsibilities, our employees continue to focus all of our corporate resources to provide professional services to meet our Client needs. To that end, we would like to ask for your continued support and patronage to help us serve our Clients. ”

**FOUNDER
MESSAGE**

OUR GROUP OF COMPANIES

Real Life Advertising and International Exhibition Management Services (IEMS) Co.td are the co-companies of Bright Corner. With the combined sources of printing and production experts, we fulfill the exact requirements of our Clients.



Real Life advertising is a region leader of production in POS and promotion items, brochures, business cards, flyers, books, high quality Vinyl and stickers, and sublimation products. It has been running business regards with advertising and large format printing area more than 20years. Also provides the services of indoor and outdoor sign ages. List of company's reputed Clients include Dulwich College, KFC, Shwe Taung Group, MK, Red Dot, Save the Children, Embassies, Government officials and etc.

 <http://www.reallifemyanmar.com/index.php/en/>



IEMS Company provides the services of managing the International Trade exhibitions, Events, Conferences and Product Launches. Our list of reputed Clients like Thilawa, MPT, JCB and many others government associations and businesses.



<http://www.iemsmyanmar.com/index.php/en/>

In official
partnership with:



WHY CHOOSE US

We can help you put your ideas in reality by understanding your project needs and suggesting you a number of cost effective solutions and help you choose the best option to make the job feasible and limit costs to reasonable levels. The materials used by us such as Road Markings, Guardrails and Reflective Sheeting are from one of the top global "Original Equipment Manufacturers".



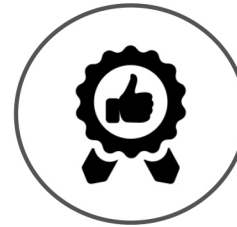
PASSIONATE STAFFS

We specialize in production and printing business; we take pride in our advanced and various skills and experiences.



EFFICIENT & COMPETITIVE

Cost effective & efficient products; we are always innovating for better solutions and techniques.



RELIABLE QUALITY

Being in the market for years tells a lot about us. We have in house sampling and testing facilities.




MEET OUR TEAM

Our team of growing professionals have been handpicked to ensure that we have group of passionate individuals. We feel this is important as we strive to create unique and fresh ideas for businesses from start to finish. We provide not only the best comprehensive service possible, but also maintain a respectful, close relationship with each and every Client.




Thet Lwin Shwe @Mr.Ian
Founder and CEO

 : +95 95135613

 : thetlwinshwe@gmail.com
iantaw@icloud.com




Mr. Kyaw Kyaw
Marketing Director

 : +95 95071454

 : kk5071454@gmail.com



Mr. Pike Htway
Sales Executive

 : +95 9974061273

 : brightcorner@reallife-myanmar.com

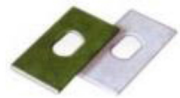
OUR PRODUCTS

Bright Corner Co.,Ltd is a leading supplier of Road Safety products and equipment in Yangon. We supply a vast array of Road Safety products such as Road Studs, Road Marking Paint/ Machines, Guardrails (Crash Barriers), Traffic Sign Board and Reflective Sign Sheeting.

GUARDRAILS (CRASH BARRIERS)



- Flex Beam
- Post
- Separators
- Post Cap



Flat Washers



Screws

Red/ White
Guardrail
Reflector



ROAD MARKING PAINT



White



Yellow



Road Marking
Paint Machines



ROAD STUDS



Yellow



W/R

2R



Road studs provide effective night guidance during night hours and in adverse weather conditions. They are easily visible and can be heard and felt due to the rumble when a vehicle crosses over them.

TRAFFIC SIGN BOARDS AND ROAD DELINEATORS



Traffic Signs/ Kilo Limits Signs

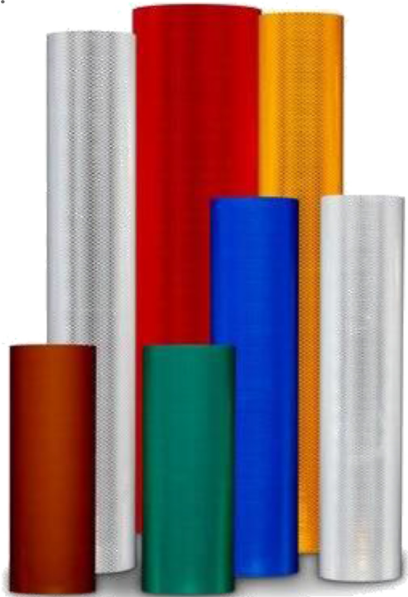


R/W/Y Guide post
Road delineators

3M PRODUCTS FOR ROAD SAFETY

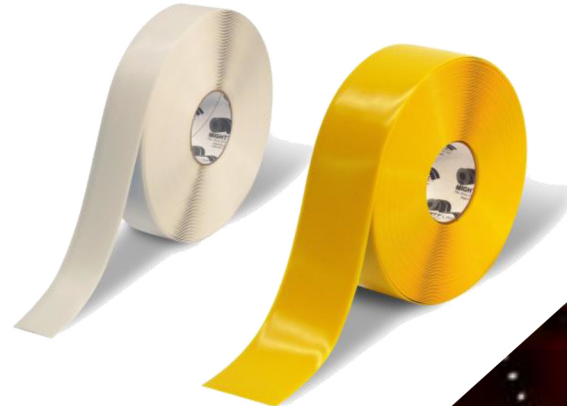
3M™ Diamond Grade™ DG³ Reflective Sheeting Series 4000

Durable reflective sheeting for Road and Traffic signs.



3M™ Stamark™ High Performance Pavement Marking Tape Series 380AW

Durable, preformed reflective tapes for permanent-type applications such as lane and center lines, edge lines, gore markings, crosswalks, stop bars, symbols and legends.



Authorized Reseller of Myanmar

BRIGHT CORNER



ROAD SAFETY PROJECTS

Road Marking Paints and Highway Guardrails installations processes needs to be handled with care of emphasize on Safety. Bright Corner team ensures that the projects' stages are properly managed from planning to executing till unveiling the projects.



Fig.1.1 Working sites about Road Marking paints (Yellow and White.) Sign Board, Guard Rail



ROAD SAFETY PROJECTS

Road Marking Paints and Highway Guardrails installations processes needs to be handled with care of emphasize on Safety. Bright Corner team ensures that the projects' stages are properly managed from planning to executing till unveiling the projects.



Fig.1.2 Working sites about Road Marking paints (Yellow and White.) Sign Board, Guard Rail



UPCOMING PROJECT

As a pioneer project in Myanmar, under Bright Corner name we were planning to set-up the “**Taunggyi Sign**” (like Hollywood Sign over Mount Lee) is an Taunggyi Landmark and cultural icon overlooking Taunggyi, Shan State, Myanmar. The following images are the preparation stage of this upcoming project:



OUR CLIENTS & TESTIMONIALS



Ministry of Construction



Asian Development Bank

Asian Development Bank



SHWE TAUNG

Shwe Taung Group of Companies



Max Highway



Max Myanmar CONSTRUCTION



ORIENTAL HIGHWAY



JUNGHEUNG CONSTRUCTION

Jungheung Construction Co.,Ltd.

“

We want to extend our appreciating regarding the excellent service we received last week. We had tough demands and after communicating with your team, we were assured that our project will be completed on time. We are thoroughly dazzled by the service we received. – Ministry of Construction

“

- International Quality Standards
 - Timely delivery of products
 - Cost effective products
- Shwe Taung Group of Companies

“

Great supporting partner with excellent service.
- Asian Development Bank





THANK YOU.



KYAW KYAW



09-5071454, 09-965071454



brightcorner@reallife-myanmar.com, brightcornermm@gmail.com